



Message from the PAC Chair

Dear Colleague,

The SDAHO PAC is devoted to helping elect and support candidates who understand the key issues facing South Dakota health care providers and those who are willing to protect public policies for vital health care services.

It also gives members the opportunity to educate those running for office to the many issues facing health care in South Dakota, including Medicaid funding, coverage for the uninsured, provider transparency and reform for long-term care services.

Your generous contribution strengthens the voice of health care in delivering our policy messages to candidates for elective office who truly do impact how health care is delivered in South Dakota and the rest of the country.

Please join me in strengthening our unified political voice – contribute today!

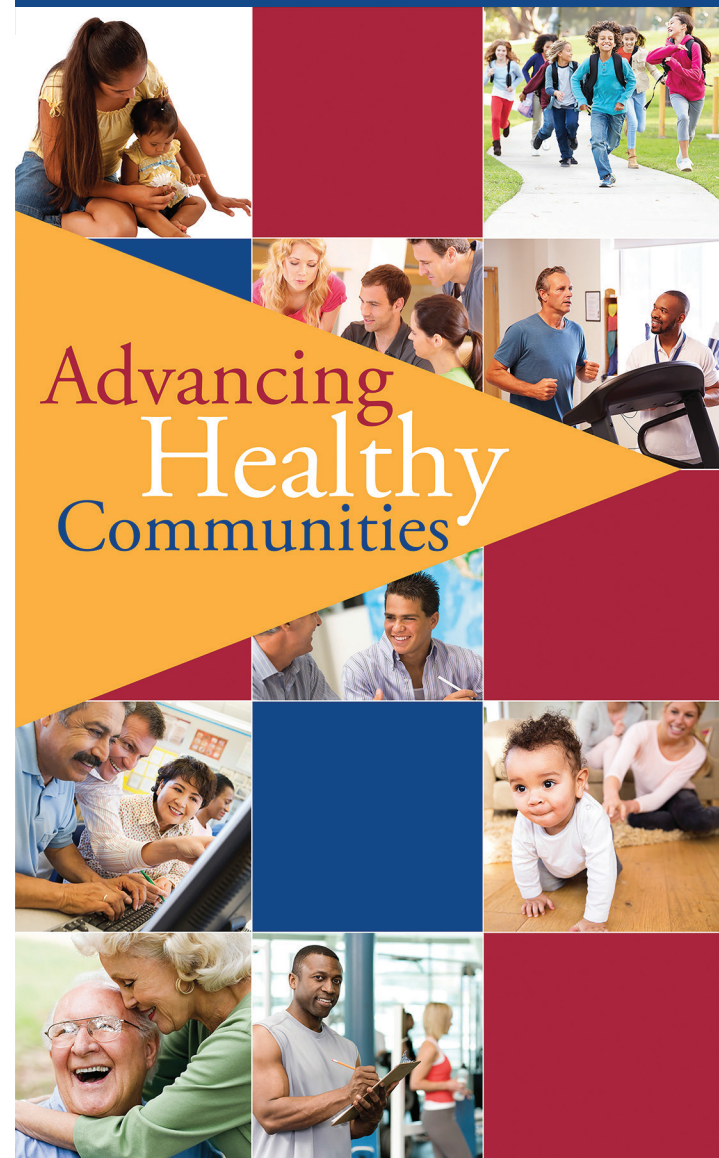


Senior Director
Sanford Vermillion Medical Center,
Vermillion
SDAHO PAC Chair 2017

SDAHO PAC MEMBERS 2016-2017

- **Tim Tracy**, Senior Director, Sanford Vermillion Medical Center, Vermillion (Chairperson)
- **Curt Hohman**, SVP Managed Facilities, Avera McKennan Hospital & University Health Center, Sioux Falls (Vice-Chairperson)
- **Mike Diedrich**, VP Development & Government Affairs/Community Relations, Regional Health, Rapid City
- **Deb Fischer-Clemens**, Senior VP of Public Policy, Avera Health, Sioux Falls
- **Mary Hendricks**, Board Member, Sanford Chamberlain/Sanford Care Center Chamberlain, Chamberlain
- **Jay Jahngig**, Administrator/CEO, Faulkton Area Medical Center, Faulkton
- **Bruce Johnson**, Administrator, Bethesda Home of Aberdeen, Aberdeen
- **Nick Kotzea**, Director of Legislative Affairs, Sanford Health, Sioux Falls
- **Veronica Schmidt**, CEO, Custer Regional Hospital & Senior Care, Custer
- Treasurer: **Scott A. Duke**, SDAHO President/CEO

SDAHO PAC 2017

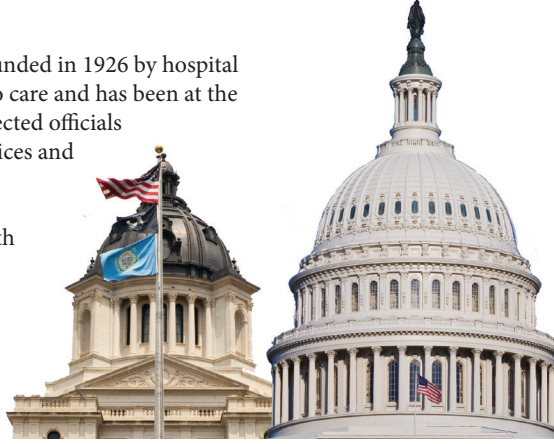


How can I help influence the political process?

The South Dakota Association of Healthcare Organization (SDAHO) was founded in 1926 by hospital administrators and physicians to advance healthy communities, and access to care and has been at the heart of our advocacy efforts. Your contribution to SDAHO PAC supports elected officials who understand the importance of preserving vital access to health care services and are willing to make a difference in both Washington, D.C., and Pierre.

Your contribution also reaches federal candidates whose decisions affect South Dakota health care providers. A portion of qualified contributions are transferred to the American Hospital Association's Political Action Committee to support South Dakota's congressional delegation.

By contributing, you are joining with others to create a strong, unified voice that will be listened to by lawmakers and those running for office.



How funds are spent

The Political Action Committee, represented by SDAHO members from each district, administers SDAHO PAC 2017. They determine which candidates receive financial support based on qualifications, electability, responsiveness and recommendations from local health care providers in that candidate's district.

Contribution levels

SUGGESTED CONTRIBUTION	SMALL FACILITY	LARGE FACILITY
CEOs & Trustees	\$ 500	\$1,000
Sr. Vice Presidents/VPs	\$ 350	\$ 500
Directors	\$ 100	\$ 250
Managers	\$ 50	\$ 100
Staff/Volunteers	\$ 10	\$ 10

A small facility is defined as less than 25 beds and a large facility is defined as greater than 25 beds.

Composition

- SDAHO PAC is a nonpartisan and independent political action committee.
- Every dollar contributed to SDAHO PAC supports qualified candidates. There are no administrative fees.
- Only contributions from personal accounts can be accepted. Contributions from corporate and/or business accounts are prohibited and will not be accepted.
- Cash contributions cannot exceed \$50.

Contributors

Under federal law, eligible staff can be asked to contribute if they are salaried employees who have policymaking, managerial, professional or supervisory responsibilities. Your contribution is important to us, but we want to emphasize that all contributions are voluntary and have no impact on your status, performance review, compensation or employment. Any amount given, or the decision not to give, will not advantage or disadvantage you.

Contributions to the SDAHO PAC or AHAPAC are not

deductible as charitable contributions for federal income tax purposes. They are vitally important because they help secure the future of hospitals and post-acute care facilities and those who depend on them. State law requires the SDAHO PAC to use best efforts to collect and report the name, mailing address and employer of individuals whose aggregate contributions exceed \$100. Federal law requires that we use our best efforts to collect and report the name, mailing address, occupation and name of employer of individuals whose contributions exceed \$200 in a calendar year.

SDAHO Political Action Committee (SDAHO PAC) Contribution Form

Yes. I want to have an impact on health-related legislative issues in South Dakota.

Please complete this form and return it with your contribution to: SDAHO PAC • 3708 W. Brooks Place • Sioux Falls, SD 57106
Contributions made by check must be written from **personal accounts. Corporate checks are prohibited by law.** Please print legibly.

Please check your role in facility:

- Health care executive/administration/management
- Professional employee (MD, RN, etc.)
- Salaried medical staff
- Board member/trustee
- Other (specify) _____

Level of success:

- \$1,000 AHA/SDAHO Ben Franklin Club *
- \$ 500 AHA/SDAHO Chairman's Circle *
- \$ 500 SDAHO Rushmore Circle
- \$ 350 AHA/SDAHO Capitol Club *
- \$ 250 SDAHO Capitol Club
- Other _____

Full Name _____

Home Street Address _____

Home City/State/Zip _____

Email Address _____

Employer Name _____

Employer Address _____

Title/Occupation _____

Daytime Phone _____

PAYMENT OPTIONS

- Check payable to SDAHO PAC
- Invoice me via PayPal to pay with a credit card

Email invoice to: _____

Amount: \$ _____

Nineteen percent (19%) of AHA member facility contributions will be distributed to AHAPAC unless otherwise designated. One hundred percent (100%) of all other contributions will be retained by SDAHO PAC. Copies of our reports are filed with the Secretary of State, State of South Dakota, Pierre, SD 57501.

** For AHA/SDAHO Ben Franklin Club, Chairman's Circle and Capitol Club members, one-half of your contribution will be forwarded to AHAPAC and one-half will be retained by SDAHO PAC.*

Thank you for your contribution and for supporting health care delivery in South Dakota!