

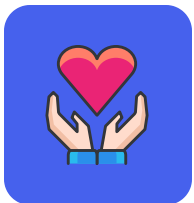
SDAHO OFFERS PROFESSIONAL DEVELOPMENT AND CEU'S!

DID YOU
KNOW?



40.4 CE's offered already

Nursing Home Administrator



26.6 CE's offered already

Social Worker

Educational opportunities available live and on-demand. CE's available for both!

Education Focus Areas:

- Leadership & Governance
- Patient & Resident Care
- Regulatory & Compliance
- Self-Care
- Workforce Development

Visit portal.sdaho.org or scan this code to access the SDAHO portal!

